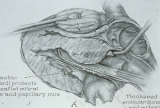


Extended toward lumen

Retractor (lighted) protects ant. leaflet without valve and papillary mus.

Thickened endocardium and retracted leaflet



A



B

Septum

Retraction and counter pressure  
on external wall rotates  
ventricular septum anteriorly  
to enhance view

L vent drains

Non-coronary  
leaflet

Hypertrophied  
inter-ventricular  
septum

SA

LA

RA

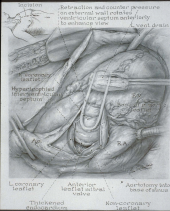
L coronary  
leaflet

Anterior  
leaflet atrial  
valve

Aorticomy into  
base of aorta

Thickened  
endocardium

Non-coronary  
leaflet

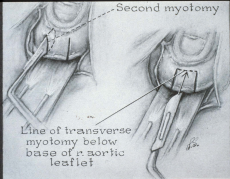




Line of incision  
for myotomy into  
hypertrophied  
IV septum

Second myotomy

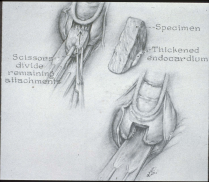
Line of transverse  
myotomy below  
base of r. aortic  
leaflet

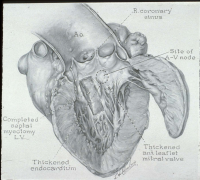


Scissors  
divide  
remaining  
attachments

Specimen

Thickened  
endocardium





R. coronary sinus

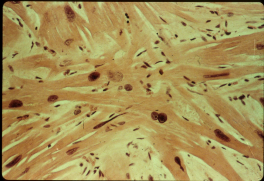
Ao

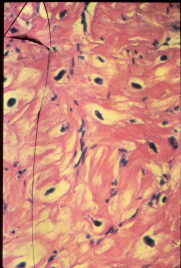
Site of A-V node

Completed aortic valve replacement - LV

Thickened endocardium

Thickened mitral valve leaflet







## SURGICAL TECHNIQUES

1. Myotomy/Myectomy
2. Mitral Valve Replacement
3. Right sided septal resection